



FC700 Series Fiberglass Cooling Tower

- Energy efficient induced draft, counter-flow cooling tower design
- Rugged seamless single piece basin
- Side access door
- Factory assembled (fan and motor removed prior to shipment to prevent shipping damage)

Electrical Features

- TEAO direct drive fan motor with permanently lubricated sealed motor bearings

Warranty

- 10 year parts warranty on cooling tower basin and casing
- 5 year parts warranty on complete cooling tower, including fan motor

General

The FC Series fiberglass cooling towers are designed for outdoor use in industrial manufacturing locations. The cooling towers are assembled in our ISO 9001:2000 certified facility. The cooling towers ship assembled with the fan motor and fan blade removed to prevent shipping damage.

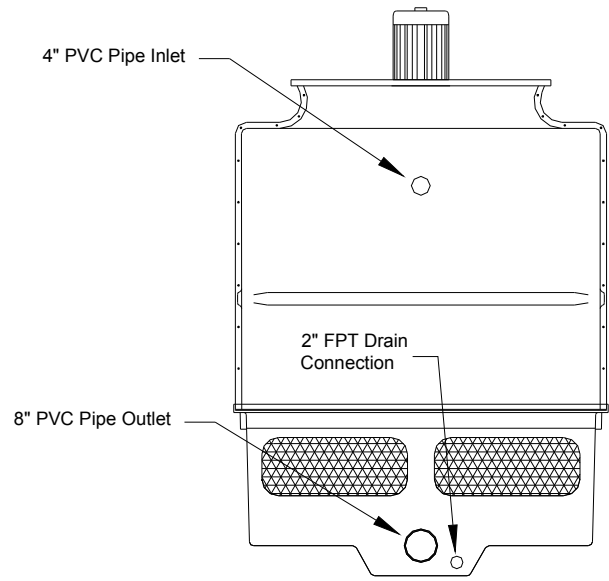
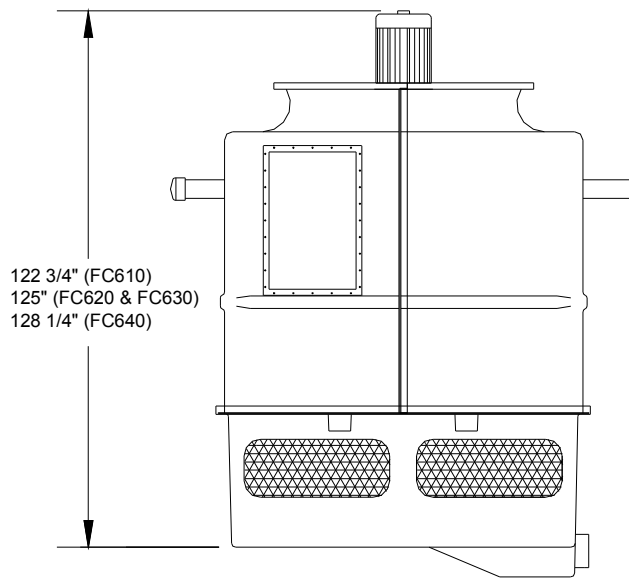
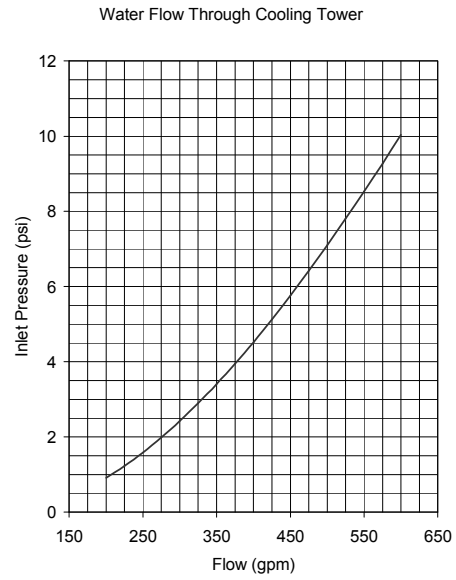
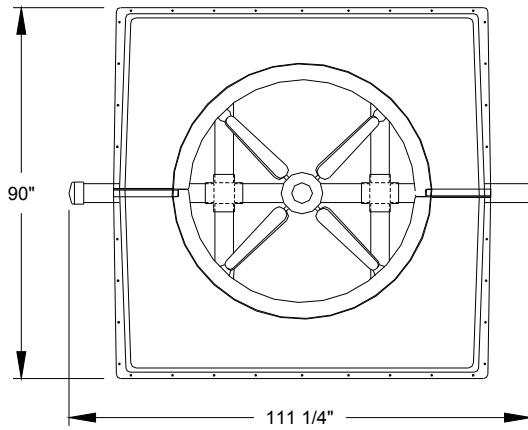
Mechanical Features

- Fiberglass construction of cooling tower basin and casing
- Fiberglass internal structural supports for the fill and drift eliminators
- Smooth exterior fiberglass with durable gel-coat finish with UV inhibitors
- 304 stainless steel fan motor support and fasteners
- Schedule 40 PVC water distribution piping
- PVC fill, inlet louvers, and drift eliminators
- Non-clogging large orifice pressurized water distribution system
- Adjustable pitch, high efficiency, fiberglass reinforced polypropylene fan blades with cast aluminum alloy fan hub



FC600 Series Fiberglass Cooling Tower

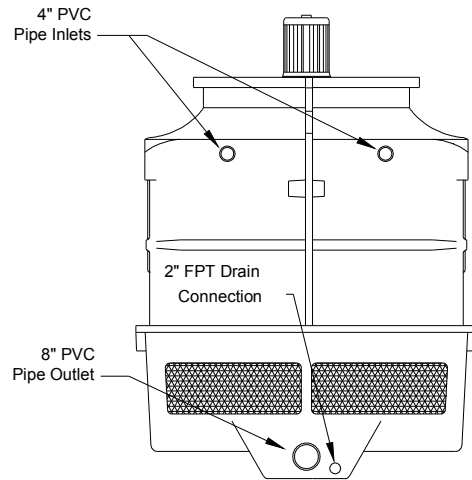
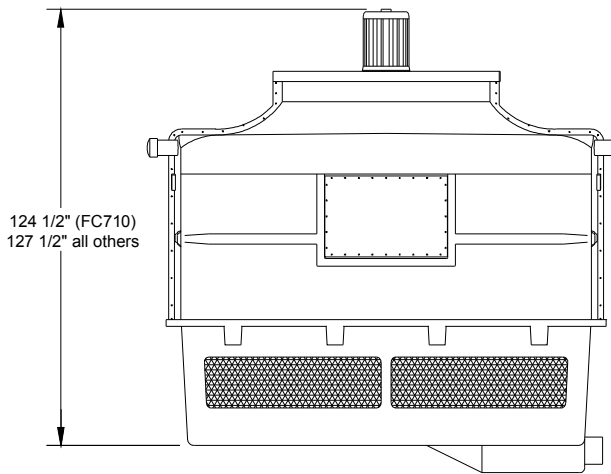
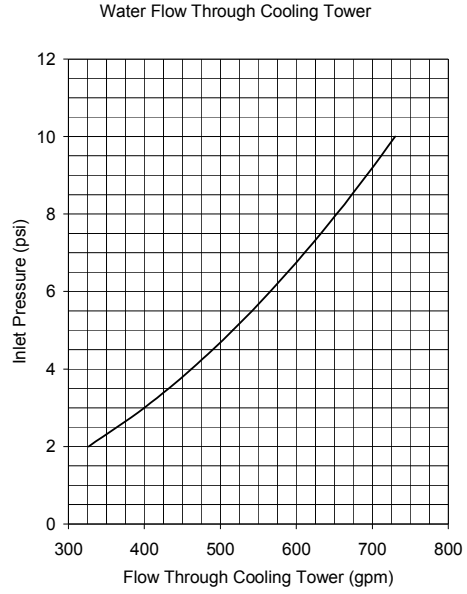
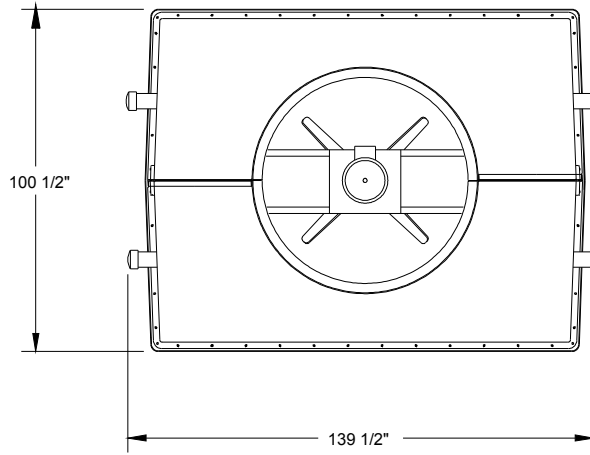
FC600 Series



Model	Cooling Tons ¹	Fan Motor (hp)	Fan Motor FLA @ 460/3/60	Nominal Flow (gpm)	Minimum Inlet Pressure (psi)	Operating Range (gpm)	Shipping Weight (lbs)	Operating Weight (lbs)
FC610	100	3	6	300	6	200 to 600	1,760	4,535
FC620	115	5	9	345	4	200 to 600	1,910	4,535
FC630	125	5	9	375	4	200 to 600	1,910	4,685
FC640	140	7½	12	420	5	200 to 600	2,150	4,925

¹Cooling Tons based on 15,000 BTU/Hr/ton with 85°F leaving water, 78°F wet bulb and 3 gpm/ton tower water.

FC700 Series



Model	Cooling Tons ¹	Fan Motor (hp)	Fan Motor FLA @ 460/3/60	Nominal Flow (gpm)	Minimum Inlet Pressure (psi)	Operating Range (gpm)	Shipping Weight (lbs)	Operating Weight (lbs)
FC710	170	7½	12	510	5	350 to 725	2,660	5,230
FC720	185	10	17	555	6	350 to 725	2,700	5,530
FC730	205	10	17	615	7	350 to 725	2,700	5,570
FC740	240	15	24	720	10	350 to 725	2,750	5,570

¹Cooling Tons based on 15,000 BTU/Hr/ton with 85°F leaving water, 78°F wet bulb and 3 gpm/ton tower water.



7720 North Lehigh Avenue
Niles, Illinois 60714-3491
Tel: (847) 966-2260
Toll Free: (888) 828-7387
Fax: (847) 966-9358

Email: info@thermalcare.com
Website: www.thermalcare.com

Manufacturer reserves the right to
change specifications or design
without notice or obligation.
Thermal Care is a registered
trademark of MFRI, Inc.